

# LIGHT ALLOY CONTROL STATIONS

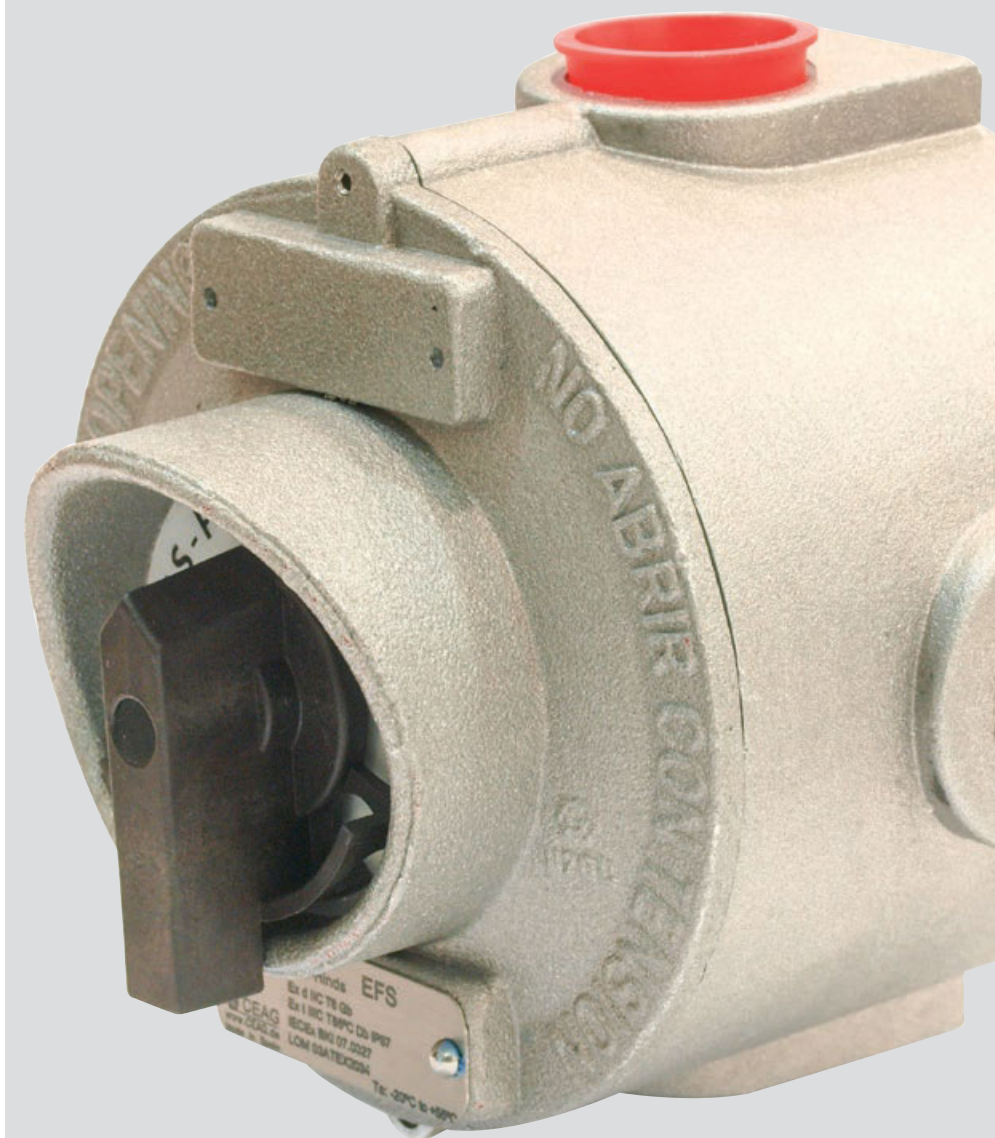
## Ex-d pushbutton and control switches

Ex-d explosion-protected control stations made of light alloy metal are equipped with up to three components to switch and control processes in areas of Zone 1, 2, 21 and 22 at no risk of explosion.

4

Built-in components, such as signal lamps, push-buttons and switches are ready installed inside of the enclosures. To facilitate insertion of cables into the entries, Ex-d threads for 3/4" Ex-d cable glands are available at the enclosures.

A high "IP degree of protection" allows universal use in areas at risk of explosion. The light metal control stations have an outside earthing connection.



- High degree of protection IP67
- High mechanical, chemical and thermal resistance
- Individual configuration



**Technical data**

**Ex-d control stations type EFS**

Marking accd. to 94/9/EC	⊕ II 2 G Ex d IIC T6 / ⊕ II 2 D IP67 T 85 °C
EC-Type Examination Certificate	LOM 03 ATEX 2034
IECEX Certificate of Conformity	IECEX BK1 07.0027
Marking accd. to IECEx	Ex d IIC T6 Ex tD A21 IP67 T80 °C
Permissible ambient temperature	-20 °C up to +55 °C
Rated voltage	max. 660 V AC
Rated current	max. 20 A
PE Connecting terminals	2 x 2.5 mm <sup>2</sup> / PE ext.: 2 x 6 mm <sup>2</sup>
Protection class	I
Incandescent lamp	230 V 3 W
Degree of protection accd. to EN 60529	IP67
Cable glands/Gland plates/Enclosure drilling	1 x 3/4" ISO 7/1 or 2 x 3/4" ISO 7/1, one plugged
Enclosure material	light alloy
Enclosure colour	natural finish

Other versions available on request

**Ordering details**

Type	Content	Weight	Order No.
<b>Control units</b>			
EFS A	1 x pushbutton, 1 NO + 1 NC, label „white“	0.75 kg	<b>NOR 000 114 110 511</b>
EFS A/A	2 x pushbutton, 1 NO + 1 NC, label „I - 0“	0.85 kg	<b>NOR 000 114 110 553</b>
EFS D	1 x mushroom-head pushbutton, 1 NO + 1 NC, label „0“	0.80 kg	<b>NOR 000 114 110 587</b>
EFS A/D	1 x pushbutton 1 NO, 1 x mushroom-head pushbutton NC, label „I - 0“	0.85 kg	<b>NOR 000 114 110 540</b>
EFS L	1 x alarm pushbutton, 1 NO + 1 NC, with window	0.85 kg	<b>NOR 000 114 110 595</b>
EFS A/A/A	3 x pushbutton, 1 NO + 1 NC, label „0 - I - II“	1.50 kg	<b>NOR 000 114 110 747</b>
EFS A/A/V	2 x pushbutton, 1 NO + 1 NC, label „0 - I - II“, 1 x green signal lamp	1.50 kg	<b>NOR 000 114 110 748</b>
EFS 72	for measuring instrument AM 72 (72 mm x 72 mm), not part of the delivery	1.20 kg	<b>NOR 000 114 110 740</b>

<b>Control switches</b>				
EFS I	0 - 1		0.90 kg	<b>NOR 000 003 110 945</b>
EFS H	1 - 2		0.90 kg	<b>NOR 000 003 110 937</b>
EFS J	1 - 0 - 2		0.90 kg	<b>NOR 000 003 110 953</b>
EFS P	0 - 1		0.90 kg	<b>NOR 000 003 110 995</b>
EFS P40	0 - 1		0.90 kg	<b>NOR 000 114 110 738</b>

## | Ex-d control stations |



EFS 72



EFS A/A/V



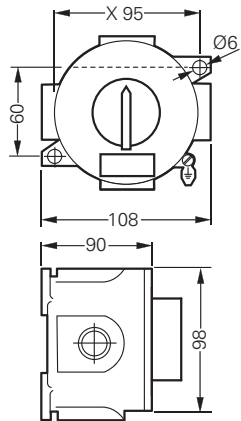
EFS A



EFS D

4

## Dimension drawing



EVS...

X = fixing dimensions