

# 2.5

## Ex-Linear light fittings made of stainless steel

eLLS 08018/18 / eLLS 08036/36 / eLLS 08018/18 NE / eLLS 08036/36 NE  
(Zone 1, 2, 21, 22)

### Linear light fittings made of stainless steel

The light fitting series eLLS 08 combines the latest lighting technology with a robust construction. Thanks to a new charging and monitoring technology with intelligent microelectronics, the NE emergency lighting luminaires provide reliable safety and reduced maintenance costs. Because they are made of high-grade, seawater-

resistant stainless steel, they are extremely robust and resistant to aggressive chemical environments and are therefore, ideal for all hazardous areas with extreme ambient conditions.

### Long-term safety

The luminaires are equipped with a two-channel electronic ballast that features a reliable EOL circuit. Thus, the lamps are checked for proper operation and shut down safely in the event of a malfunction at the end of their service life. With the NE-version a function test is carried out automatically on a weekly basis and a quarterly, partial duty-cycle test. These tests provide additional safety and drastically reduce the necessary amount of manual tests. The charging and discharging functions are monitored constantly by the micro-processor.

### Simple and cost-effective installation





In conjunction with the generously dimensioned terminal compartment, the standard single-ended through-wiring allows a cost-effective installation. The double-sided locking facility with 10 or 20 latch points allows the protective bowl to be hinged on both sides, meaning that the fitting can be mounted on either side.



### Features

- High-grade, seawater-resistant stainless steel housing
- Cost efficient installation due to single-ended through-wiring
- Dual channel ballast with EOL monitoring
- Automatic function test and partial duty cycle test (NE)
- LED display for indication of the charging, operation or fault status (NE)
- Easy replacement of battery, even in Ex-area (NE)
- High degree of protection IP66

## Ordering details

Type	Content	Terminals	Through-wiring single-ended	Through-wiring twin-ended	Cable gland/thread	Threaded plug	Blanking plug	Order No.	
<b>eLLS 08018/18</b>									
	eLLS 08018/18 (2 x 18 W)	2/6-2K	2 x 6	–	x	2 x M25, plastic	2 x M25	2	<b>1 2225 218 001</b>
	eLLS 08018/18 (2 x 18 W)	1/6-1K	1 x 6	x	–	1 x M25, plastic	1 x M25	1	<b>1 2225 218 002</b>
	eLLS 08018/18 (2 x 18 W)	2/6-2M <sup>1)</sup>	2 x 6	–	x	4 x M20, metal thread	3 x M20		<b>1 2225 218 011</b>
	eLLS 08018/18 (2 x 18 W)	1/6-1M <sup>1)</sup>	1 x 6	x	–	2 x M20, metal thread	1 x M20		<b>1 2225 218 012</b>
<b>eLLS 08036/36</b>									
	eLLS 08036/36 (2 x 36 W)	2/6-2K	2 x 6	–	x	2 x M25, plastic	2 x M25	2	<b>1 2226 236 001</b>
	eLLS 08036/36 (2 x 36 W)	1/6-1K	1 x 6	x	–	2 x M25, plastic		1	<b>1 2226 236 002</b>
	eLLS 08036/36 (2 x 36 W)	2/6-2M <sup>1)</sup>	2 x 6	–	x	4 x M20, metal thread	3 x M20		<b>1 2226 236 011</b>
	eLLS 08036/36 (2 x 36 W)	1/6-1M <sup>1)</sup>	1 x 6	x	–	2 x M20, metal thread	1 x M20		<b>1 2226 236 012</b>
<b>eLLS 08018/18 NE</b>									
	eLLS 08018/18 NE (2 x 18 W)	1/6-1K	1 x 6	x	–	2 x M25, plastic	1 x M25	2	<b>1 2225 885 101</b>
	eLLS 08018/18 NE (2 x 18 W)	2/6-2K	2 x 6	–	x	2 x M25, plastic	2 x M25	2	<b>1 2225 885 103</b>
	eLLS 08018/18 NE (2 x 18 W)	1/6-1M <sup>1)</sup>	1 x 6	x	–	2 x M20, metal thread	1 x M20		<b>1 2225 885 109</b>
	eLLS 08018/18 NE (2 x 18 W)	2/6-2M <sup>1)</sup>	2 x 6	–	x	4 x M20, metal thread	3 x M20		<b>1 2225 885 111</b>
<b>eLLS 08036/36 NE</b>									
	eLLS 08036/36 NE (2 x 36 W)	1/6-1K	1 x 6	x	–	2 x M25, plastic		1	<b>1 2226 885 101</b>
	eLLS 08036/36 NE (2 x 36 W)	2/6-2K	2 x 6	–	x	2 x M25, plastic	2 x M25	2	<b>1 2226 885 103</b>
	eLLS 08036/36 NE (2 x 36 W)	1/6-1M <sup>1)</sup>	1 x 6	x	–	2 x M20, metal thread	1 x M20		<b>1 2226 885 109</b>
	eLLS 08036/36 NE (2 x 36 W)	2/6-2M <sup>1)</sup>	2 x 6	–	x	4 x M20, metal thread	3 x M20		<b>1 2226 885 111</b>

<sup>1)</sup> with metal thread, without cable gland

Scope of delivery without lamp and fixing accessories

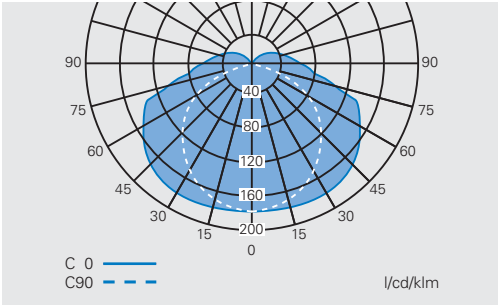
Metal cable glands see catalogue part 2: 2.3.12 ff

# 2.5

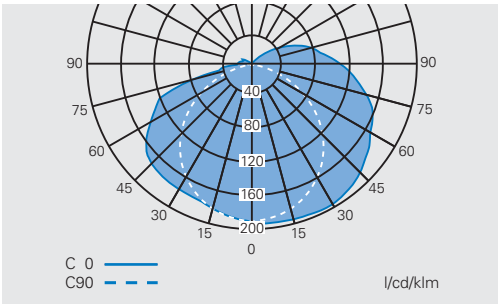
## Dimension drawing / Polar curve

eLLS 08018/18 / eLLS 08036/36 / eLLS 08018/18 NE / eLLS 08036/36 NE

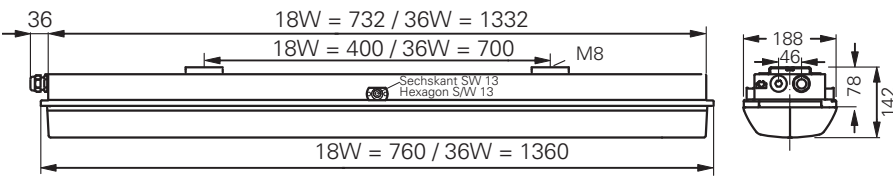
**Polar curve eLLS 08018/18  
eLLS 08036/36**



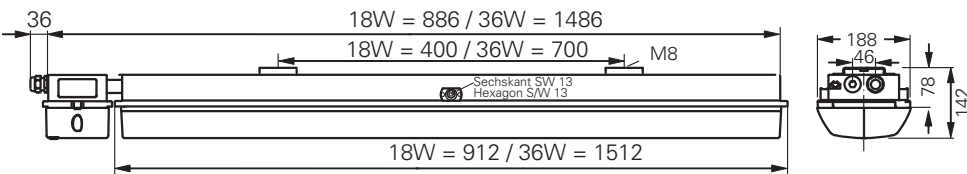
**Polar curve eLLS 08018/18 NE /  
eLLS 08036/36 NE  
(emergency mode)**



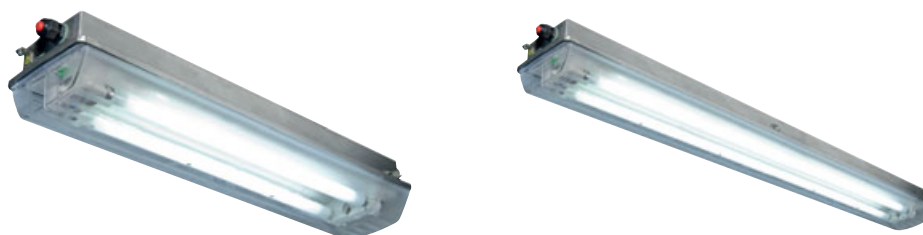
**eLLS 08018/18 / eLLS 08036/36**



**eLLS 08018/18 NE / eLLS 08036/36 NE**



Dimensions in mm



## Technical data

	eLLS 08018/18 (2 x 18 W)	eLLS 08036/36 (2 x 36 W)
EC-Type Examination Certificate	BVS 09 ATEX E 034	BVS 09 ATEX E 034
IECEX Certificate of Conformity	IECEX BVS 09.0033	IECEX BVS 09.0033
Marking accd. to 94/9/EC	⊕ II 2 G Ex de IIC T4 Gb ⊕ II 2 D Ex tb IIIC T80 °C Db IP66	⊕ II 2 G Ex de IIC T4 Gb ⊕ II 2 D Ex tb IIIC T80 °C Db IP66
Marking accd. to IECEx	Ex de IIC T4 Gb Ex tb IIIC T80 °C Db	Ex de IIC T4 Gb Ex tb IIIC T80 °C Db
Permissible ambient temperature	-25 °C up to +55 °C (U <sub>N</sub> ≥ 220 V) -25 °C up to +50 °C (U <sub>N</sub> ≤ 220 V)	-25 °C up to +55 °C (U <sub>N</sub> ≥ 220 V) -25 °C up to +50 °C (U <sub>N</sub> ≤ 220 V)
IK-class according to EN 50102	IK 10 ± 20 J	IK 10 ± 20 J
Rated voltage	110 - 254 V AC 110 - 250 V DC	110 - 254 V AC 110 - 250 V DC
Rated current	0.18 A	0.34
Frequency	50 - 60 Hz	50 - 60 Hz
Power factor cos φ	≥ 0.95	≥ 0.95
Circuit	EVG	EVG
Protection class	I	I
Lamp / Illuminant	2 x T26 / 18 W (T8)	2 x T26 / 36 W (T8)
Rated luminous flux	2700 lm <sup>1)</sup>	6700 lm <sup>1)</sup>
Lamp cap	G13 accd. to IEC 60061-1	G13 accd. to IEC 60061-1
Light output ratio	78 %	78 %
Dimensions (L x W x H)	760 x 188 x 130 mm	1360 x 188 x 130 mm
Connecting terminals	L1, L2, L3, L, N, PE max. 2 x 6 mm <sup>2</sup> per terminal	L1, L2, L3, L, N, PE max. 2 x 6 mm <sup>2</sup> per terminal
Enclosure material	stainless steel 316 Ti (1.4571)	stainless steel 316 Ti (1.4571)
Weight	6.2 kg	8.9 kg
Cable glands / gland plates / enclosure drilling	Ex-e cable glands M25 x 1.5 (plastic), option: M20 x 1.5 metal thread <sup>2)</sup>	Ex-e cable glands M25 x 1.5 (plastic), option: M20 x 1.5 metal thread <sup>2)</sup>
Degree of protection accd. to EN 60529	IP66	IP66
Protective cover / protective bowl	Polycarbonate	Polycarbonate

<sup>1)</sup> depends on used lamps

<sup>2)</sup> with dustcover if entry/thread is not closed

# 2.5

## Technical data

eLLS 08018/18 NE (2 x 18 W) / eLLS 08036/36 NE (2 x 36 W)



### Technical data

	eLLS 08018/18 NE (2 x 18 W)	eLLS 08036/36 NE (2 x 36 W)
EC-Type Examination Certificate	BVS 09 ATEX E 034	BVS 09 ATEX E 034
IECEX Certificate of Conformity	IECEX BVS 09.0033	IECEX BVS 09.0033
Marking accd. to 94/9/EC	⊕ II 2 G Ex de mb ib IIC T4 Gb ⊕ II 2 D Ex tb IIIC T80 °C Db	⊕ II 2 G Ex de mb ib IIC T4 Gb ⊕ II 2 D Ex tb IIIC T80 °C Db
Marking accd. to IECEX	Ex de mb ib IIC T4 Gb Ex tb IIIC T80 °C Db IP66	Ex de mb ib IIC T4 Gb Ex tb IIIC T80 °C Db IP66
Permissible ambient temperature	-25 °C up to +50 °C	-25 °C up to +55 °C
IK-class according to EN 50102	IK 10 ± 20 J	IK 10 ± 20 J
Rated voltage	220 - 254 V AC / optional 110 - 127 V AC	220 - 254 V AC / optional 110 - 127 V AC
Rated current	0.23 A	0.40
Frequency	50 - 60 Hz	50 - 60 Hz
Charging duration	≥ 14 h	≥ 14 h
Power factor cos φ	≥ 0.95	≥ 0.95
Circuit	EVG with emergency lighting supply	EVG with emergency lighting supply
Protection class	I	I
Lamp / Illuminant	2 x T26 / 18 W (T8)	2 x T26 / 36 W (T8)
Rated luminous flux	2700 lm <sup>1)</sup>	6700 lm <sup>1)</sup>
Lamp cap	G13 accd. to IEC 60061-1	G13 accd. to IEC 60061-1
Light output ratio	78 %	78 %
Luminous flux in emergency operation (1.5 h, one lamp)	1215 lm (90 %)	1507 lm (45 %)
Luminous flux in emergency operation (3 h, one lamp)	607 lm (45 %)	837 lm (25 %)
Rated emergency lighting duration	1-lamps can be set on site for an emergency lighting duration of 1.5 or 3 hours	1-lamps can be set on site for an emergency lighting duration of 1.5 or 3 hours
Dimensions (L x W x H)	900 x 188 x 130 mm	1500 x 188 x 130 mm
Connecting terminals	L1, L2, L3, L, N, PE; max. 2 x 6 mm <sup>2</sup> per terminal	L1, L2, L3, L, N, PE; max. 2 x 6 mm <sup>2</sup> per terminal
Enclosure material	stainless steel 316 Ti (1.4571)	stainless steel 316 Ti (1.4571)
Weight	10.4 kg	14.0 kg
Cable glands / gland plates / enclosure drilling	Ex-e cable glands M25 x 1.5 (plastic), option: M20 x 1.5 metal thread <sup>2)</sup>	Ex-e cable glands M25 x 1.5 (plastic), option: M20 x 1.5 metal thread <sup>2)</sup>
Degree of protection accd. to EN 60529	IP66	IP66
Protective cover / protective bowl	Polycarbonate	Polycarbonate

<sup>1)</sup> depends on used lamps

<sup>2)</sup> with dustcover if entry/thread is not closed